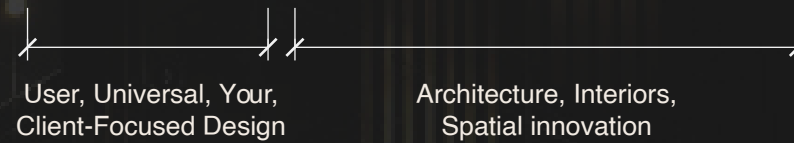




BUILT ENVIRONMENTS

ARCHITECTURE • ENGINEERING • INTERIOR DESIGN & FITOUT • PROJECT MANAGEMENT • CONSTRUCTION SERVICES





An aerial night photograph of London, featuring The Shard skyscraper prominently in the center. The city lights are visible in the background, and the River Thames flows in the foreground. The overall tone is dark and atmospheric.

# WHO WE ARE

At **USPACE** Built Environments, we don't just design and build, we redefine the way spaces come to life.

Founded by an Architect and a Civil Engineer with a combined 70+ years of international experience, **primarily in Dubai**, our firm is built on a foundation of Innovation, Precision, and Excellence.

Having delivered iconic large-scale projects across Architecture, Engineering, Fit-out, and Construction, our expertise spans from high-rise towers and commercial hubs to luxury resorts and cutting-edge infrastructure.

By combining international best practices with localized insights, we bring global standards to every project we deliver.

**INTERNATIONAL EXPERTISE  
LOCAL DELIVERY**



## Meet Our Founders



# Suresh Ram

Architect, Co-Founder & Director

Member: Project Management Institute (PMI) USA  
Associate Member: The Indian Institute of Architects  
Registered Architect: Council of Architecture, India  
Registered Member: Society of Engineers, Dubai, UAE

 [www.linkedin.com/in/sureshramaiyer](https://www.linkedin.com/in/sureshramaiyer)

Suresh Ram, Co-Founder & Director, is an accomplished Architect and Project Specialist with over 35 years of experience, primarily in **Dubai**, where he has delivered some of the region's most iconic and large-scale projects.

His extensive portfolio includes landmark developments such as DWTC Exhibition, Emaar Stock Exchange, Emaar Gold and Diamond Park, Royal Stables, Al Quoz Race Track, Royal Flight Hangars, Mashreq Bank, Refurbishment, Business Bay Executive Towers Zone 1, Autodrome

F1 Racecourse, Festival City, DHL Airside Cargo, JBR, and the Emerald Palace Kempinski Resort on Palm Jumeirah.

Having held C-level leadership positions, Suresh Ram is known for his ability to conceptualize, plan, and execute mega-projects with precision.

His expertise spans the full project lifecycle, from design development to construction and delivery, ensuring exceptional quality and timely execution. Suresh Ram's visionary approach integrates

innovative design with advanced technologies, enabling transformative solutions that redefine industry benchmarks. His leadership, strategic acumen, and multicultural experience have made him a trusted partner for high-profile clients and a driving force behind complex projects.

As Co-Founder & Director, Suresh Ram brings his wealth of experience, industry expertise, and forward-thinking vision to **Uospace**, laying the foundation for excellence in Architecture, Interior design, and Project management.




## Meet Our Founders



# Sunil Prabhakaran

Civil Engineer, Co-Founder & Director

B.Tech in Civil Engineering  
with rank holding in Advanced Structural Design  
MBA in Finance from University of Wales  
Registered Member: Society of Engineers, Dubai

 [linkedin.com/in/sunilprabhakaran](https://www.linkedin.com/in/sunilprabhakaran)

Sunil Prabhakaran, Co-Founder & Director, is a seasoned Civil Engineer and accomplished entrepreneur with over 30 years of expertise spanning Construction, Engineering, Fit-out, and General Trading industries. With a B.Tech in Civil Engineering, where he ranked in Advanced Structural Design, and an MBA in Finance from the University of Wales, Sunil combines technical excellence with strategic business acumen.

Throughout his career, Sunil has held leadership roles, including CEO and General Manager, at mid-sized

corporates in Dubai, where he spearheaded business process reengineering (BPR) initiatives and managed complex contracts with precision. His ability to align technical know-how with business objectives has made him a trusted leader in delivering high-impact projects across Dubai and India.

Currently serving as an entrepreneur in the Construction and Fit-out industry, Sunil is a registered member of the Society of Engineers, **Dubai**, and continues to leverage his vast experience and forward-

thinking approach to drive innovation and excellence in every project he undertakes.

As Co-Founder & Director, Sunil plays a pivotal role in shaping the vision and operations of **Uospace Built Environments**.

# OUR VISION

At **USPACE**, we envision crafting environments that inspire, endure and elevate the human experience.



# OUR APPROACH

Every project is unique, and we approach it with a bespoke, client-centric mindset. We listen, strategize, and execute with precision and innovation, ensuring that our client's aspirations are translated

into extraordinary built realities. Through a seamless fusion of design intelligence, engineering excellence, and cutting-edge technology, we simplify complexity and deliver with certainty.



# WHAT WE DELIVER

We believe that exceptional spaces seamlessly blend luxury with purpose, balancing aesthetics, functionality, and sustainability.

Our goal is to push the boundaries of design and construction, creating timeless spaces that not only meet today's needs but also shape the future.

## U SPACE

### ● ARCHITECTURAL SERVICES

We specialize in designing functional and aesthetically striking spaces, tailored to meet client visions while addressing sustainability and technical precision. From concept development to detailed execution, our architectural services ensure innovative and future-ready built environments.

### ● PROJECT MANAGEMENT

We provide end-to-end project management solutions, ensuring every phase – from planning and procurement to execution and delivery – is handled with unmatched attention to detail, on-time delivery, and cost efficiency.

### ● INTERIOR DESIGN SERVICES

Our interior design services focus on creating immersive, human-centered experiences that seamlessly blend aesthetics, functionality, and ergonomics. Whether it's a luxury residential space or a cutting-edge commercial facility, our designs reflect individuality while optimizing space utilization.

### ● CONSTRUCTION SERVICES

Our construction services prioritize precision, quality, and safety. By leveraging modern construction techniques and technologies, we deliver high-performing structures that meet global standards and exceed client expectations.

## INTERNATIONAL EXPERTISE LOCAL DELIVERY



# HOW WE DELIVER

At **USPACE** Built Environments, we create spaces that **inspire, perform, and transform** the way people interact with their surroundings. Our delivery process is driven by **precision, innovation, and an unwavering commitment to excellence**—ensuring that every project is executed with clarity and purpose.

We believe that **great spaces begin with great conversations**. Our approach starts with **listening intently** to our clients, understanding

their **vision, aspirations, and functional needs**. We meticulously record their brief, translating their ideas into a **wellstructured roadmap**. From the **initial feasibility studies to design development, construction management, and final handover**, we provide **seamless guidance at every stage**.

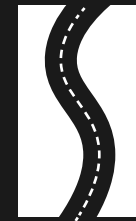
Our hands-on approach ensures that clients feel **supported, informed, and confident throughout the journey**.

# HANDS-ON WORKFLOW



## LISTENING AND UNDERSTANDING

- Engage in deep conversations with clients.
- Capture their vision, aspirations, and functional needs.



## ROADMAPPING

- Meticulously record the client's brief.
- Develop a structured plan for execution.



## PROJECT STAGES

- Feasibility Studies
- Design Development
- Construction Management



## FINAL HAND OVER



# OUR TARGET MARKET



RESIDENTIAL



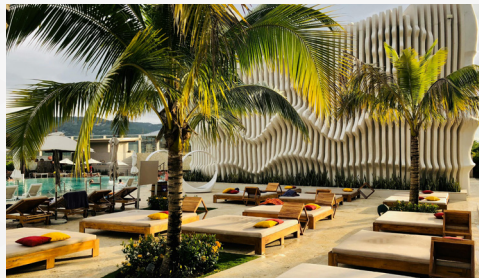
COMMERCIAL



INDUSTRIAL



HEALTHCARE



HOSPITALITY



INTERIOR DESIGN



INTERIOR FITOUTS



PROJECT MANAGEMENT



CONSTRUCTION SERVICES

# OUR SERVICE DELIVERY SYSTEM

At **USPACE** Built Environments, we ensure seamless project execution from concept to completion, balancing innovation, precision, and client-focused solutions.

We start by deeply understanding the client's vision, conducting feasibility studies to assess technical, financial, and regulatory factors. Every requirement is meticulously captured and translated into a clear design strategy.

During design development, we blend aesthetics with engineering precision,

leveraging advanced digital tools to refine concepts. Our designs are functional, sustainable, and globally benchmarked, while respecting local regulations and cultural nuances.

Our project management approach emphasizes proactive problem-solving and risk mitigation. We coordinate multi-disciplinary teams, oversee budgeting, scheduling, procurement, and quality control to keep projects on track and within budget.

In the construction phase, we maintain strict oversight —

collaborating with contractors, engineers, and suppliers to ensure flawless execution. From material selection to final handover, our rigorous processes uphold the highest quality standards.

By combining global expertise with local adaptability, we deliver efficient, high-quality projects that stand the test of time. Our indigenously designed Construction & Fitout Optimization Framework, built on a Total Quality approach, ensures every project exceeds expectations.



# INTERNATIONAL EXPERIENCE

At **USPACE**, our Co-Founders & Directors bring **extensive global experience**, particularly from Dubai, where they have successfully led **large-scale, high-profile projects** across commercial, residential, luxury hospitality, and infrastructure sectors.

Navigating complex **design, construction, and project execution**, they have tackled **technical, commercial, and regulatory challenges**, ensuring projects remain **financially viable and on schedule**, even amidst budget constraints and

timeline pressures. Their expertise in **strategic problem-solving and risk management** has been instrumental in delivering **landmark developments** with precision and efficiency.

Our team excels in **managing diverse clients, large design teams, and multicultural construction environments**. We understand that **cross-cultural collaboration** is key to success, seamlessly integrating **global best practices** with **local nuances** to create spaces that are **internationally benchmarked yet regionally**

**relevant**. With deep knowledge of **global building codes, evolving design aesthetics, and industry best practices**, we **adapt seamlessly to international standards** while ensuring compliance with **local regulations and cultural expectations**. This approach guarantees that every project is **technically sound, functionally efficient, and architecturally timeless**.

# SHOWCASING EXCELLENCE

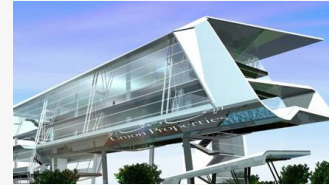


*Disclaimer:*

*The images in this profile represent projects our founders contributed to during their previous roles before establishing USPACE Built Environments. They are included solely to demonstrate our team's expertise and experience. USPACE does not claim ownership or direct involvement in these projects. All rights remain with their respective owners.*



# SHOWCASING EXCELLENCE



*Disclaimer:*

*The images in this profile represent projects our founders contributed to during their previous roles before establishing USPACE Built Environments. They are included solely to demonstrate our team's expertise and experience. USPACE does not claim ownership or direct involvement in these projects. All rights remain with their respective owners.*



# SHOWCASING EXCELLENCE



*Disclaimer:*  
The images in this profile represent projects our founders contributed to during their previous roles before establishing USPACE Built Environments. They are included solely to demonstrate our team's expertise and experience. USPACE does not claim ownership or direct involvement in these projects. All rights remain with their respective owners.



# SHOWCASING EXCELLENCE



## Disclaimer:

The images in this profile represent projects our founders contributed to during their previous roles before establishing USPACE Built Environments. They are included solely to demonstrate our team's expertise and experience. USPACE does not claim ownership or direct involvement in these projects. All rights remain with their respective owners.



USPACE Built Environments Pvt Ltd  
Bengaluru, Karnataka, India

- ✉ [Contact@uspacebe.com](mailto:Contact@uspacebe.com)
- ☎ +91 9004510129 / +91 9884969072
- 🌐 [www.uspacebe.com](http://www.uspacebe.com)
- 📘 /uspacebe
- 🌐 /company/uspacebe
- 📷 /uspacebe
- ✂ /uspacebe
- 📌 /uspacebe
- 📺 /@uspacebe

**“We Look Forward Into Transforming Your Vision Into Reality”**